



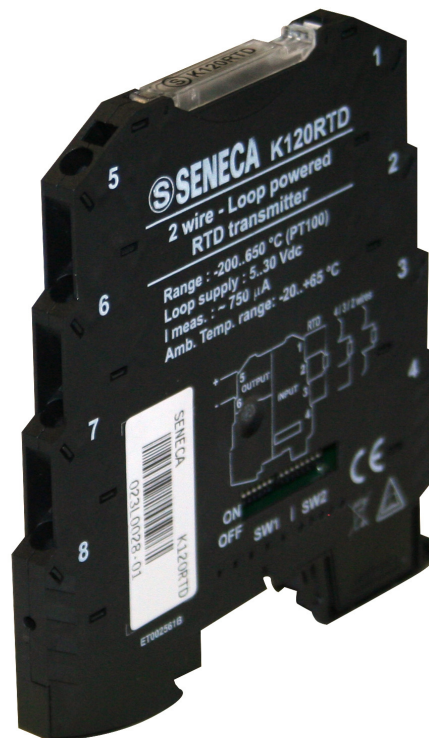
K-LINE

K120RTD

PT100, Ni100 / loop-powered converter

K-LINE

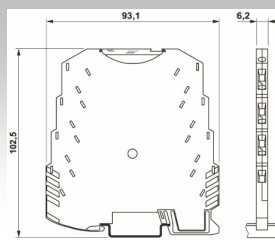
Temperature converters



- ▶ INPUT: PT100 (-200..+650 °C), Ni100 (-60..+250 °C)
lowest span 20 °C
- ▶ OUTPUT: N.1 channel current 4..20 or 20..4 mA
- ▶ Max Consumption 24 mA
- ▶ Measurement conversion 16 bit
- ▶ Power supply range 5..30 Vdc (loop powered)
- ▶ Tiny dimensions (6,2 x 93,1 x 102,5 mm)
- ▶ Precision class 0.1% or 0,1 °C
- ▶ Programming via dip-switch or software
(S117P, Configuration kit)

TECHNICAL DATA

K120RTD – PT100, Ni100 / loop-powered Converter



ORDER CODES

K120RTD PT100, Ni100 / loop-powered converter

Accessories (Programming)

- S117P**
- USB ↔ TTL-RS232 Serial Converter
 - USB cable
 - TTL cable
 - CD with drivers and KT120-SOFT

GENERAL FEATURES

Power supply	5...30 Vdc
Channels	N.1 input, N.1 output
Thermal derivation	< 100 ppm/K
Status indicators	Anomaly, alarm
Power supply on terminals	Yes
Hot swapping	Yes
Max Power consumption	from 21 mA to 24 Vdc
Lowest Consumption (no load)	7,5 mA
Galvanic isolation	No
A/D Conversion	16 bit
Rejection	50 – 60 Hz (programmable)

Filter	Supplementary to reading stabilization
DIP Switch	-Inputs signal setup -Zero and Span configuration -Output signal setup
Processing	Floating point 32 bit
Dimensions	6,2 x 93,1 x 102,5 mm (w x h x d)
Case, Weight, Color	PBT, 45 g, black
Operating temperature	-20...+65 °C
Connections	Plug-in screw clamp terminal blocks, wires up to 2.5 mm ²
IP Protection	IP 20
Approvals	CE, EN 61000-6-4, EN 61000-6-2
Special Functions	• Programmable Fault and shearing • Insertable Filter

INPUT

PT100 probe, (IEC 751 / EN 60751 – ITS90)
 Connection by 2, 3 or 4 wires
 Measurement Range: -200..650 °C
 Min span : 20 °C

Ni100 probe
 Connection by 2, 3 or 4 wires
 Measurement Range: -60..250 °C
 Min span : 20 °C

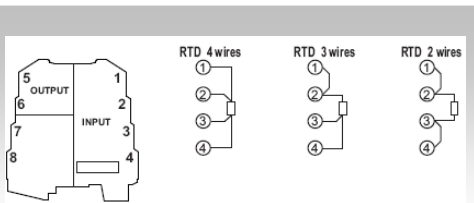
Current:

Range: 4..20 / 20..4 mA
 Higher current for protection: 25 mA
 Higher load resistance: 500 Ohm

OUTPUT

DIMENSIONS AND INSTALLATION

Input

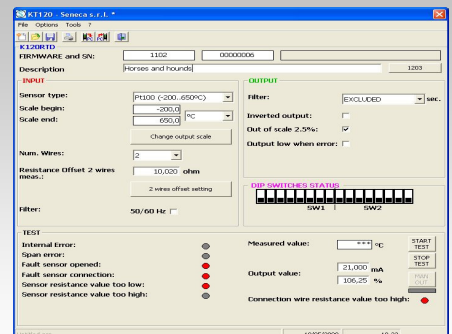


Programming

Dip-switches

MEASUREMENT FULL SCALE							
SW2	1	2	3	4	5	6	°C
							0
							5
							10
							15
							20
							25
							30
							35
							40
							45
							50
							55
							60
							65
							70
							75
							80
							85
							90
							95
							100
							110
							120
							130
							140
							150
							160
							170
							180
							190
							200
							210
							220
							230
							240
							250
							260
							270
							280
							290
							300
							310
							320
							330
							340
							350
							360
							370
							380
							390
							400
							410
							420
							430
							440
							450
							460
							470
							480
							490
							500
							510
							520
							530
							540
							550
							560
							570
							580
							590
							600
							610
							620
							630
							640
							650

Software



Output & Power Supply

